

# Sorry for the delay (for the hopefully definitive clarification of some aspects of terrestrial energy)

I borrow the title of Massimo Troisi's 1983 film, which apologized for the time it took to produce a new film. This excellent Italian actor and director, who unfortunately died prematurely, carried out his work very seriously, even if, apparently, he only had to make the spectators laugh.

I, as an inventor, took my work equally seriously, daring to make my proposals only as a pensioner, after a lifetime of work in industry and the environment. I apologize for the delay, but I am certain that we have the entire world development model wrong. I know well that I am guilty of pride, because there were great scientists in previous eras, but in those times there was not enough knowledge to separate useful inventions from those harmful to the earth's environment.

I was lucky enough to be an installer of previously industrial technological systems (participating in the construction of the entire Alfa Romeo automotive plant in Pomigliano di Arco and following its commissioning and management for seventeen years). Then, for another twenty years, I dealt with the installation and construction of environmental systems, lifting, water distribution and energy production. Only as a pensioner did I allow myself to propose myself as an inventor, transferring industrial experiences to environmental ones, not vice versa, as the industrial sector is more developed than the environmental one. My forty inventions were not accepted by world public bodies, so I was forced to write the "SPAWHE nursery rhyme" " which could be transformed into a hit song if

it were set to music and sung by a successful singer-songwriter, to also highlight the errors of science. Here is the spawhe nursery rhyme <https://www.spawhe.eu>.

“The cleaning of fossil energy published on Spawhe.eu, based above all on inorganic chemistry, which is capable of absorbing CO<sub>2</sub> by producing carbonates in the water, to speed up processes and reduce energy costs that would have entailed the circulation of very large quantities of water necessary to neutralize the very large quantities of CO<sub>2</sub> emitted by current thermal power plants and heat engines, has gradually been technologically transformed into smaller-sized solutions by exploiting the principles of Pascal and Henry. In fact, I realized that on planet Earth, all the activities that nature produces through organic and inorganic chemistry, photosynthesis and the carbon cycle can be increased in speed without any need to use thermal, nuclear energy and current renewables. It is sufficient only to increase the operating pressures of the systems, modify the circulation pumps and make the machines work differently. In fact, natural interactive systems expel, with the times required by nature, elements foreign to natural cycles, due to accidental polluting phenomena, including direct and indirect thermal effects due to volcanic explosions, natural fires that have always existed on the planet. The current industrial activities of men have exponentially multiplied the elements foreign to natural cycles, therefore nature is no longer able to restore interactive balances. Obviously, this is my truth and throughout the entire website, I explain how, in my opinion, we should have created global plants that simultaneously purify both fumes and water before they go on to pollute the soil, rivers, lakes and seas . Not having done this in any country in the world, it has not been possible to advance the state of the purification art to make it known to other countries. Therefore, the advancement of the global purification state of the art has not occurred. Consequently, it was not even possible to realize that the water circulation

pumps, if we make them work in the direction of the gravitational force, by placing them in series with the turbines, we could extract energy directly from the environment. Not having done this, it was not possible to notice that the water circulation pumps, if in addition to making them pump in the direction of the gravitational force we modify them on the suction side and make another inlet clearly separate from the main one until reaching the same impeller, we can always use the same water to create energy because we use one power supply to recycle the water of the upper basin and the other power supply to introduce into the same impeller the water discharged by a turbine fed by gravity from the water of the same upper basin. Not having done this, it was not possible to think that by replacing the upper basin with an autoclave pressurized with compressed air, given that we use a turbine connected to the autoclave outlet, we can recover the water discharged from the turbine and insert it back into the 'autoclave, whose pressurized water is recycled with the same pump impeller by means of the second supply. In this way, with the same water and the same compressed air we would have produced a power generator that extracts energy from the environment, with quite small dimensions. Not having done this, it was not possible to further reduce the dimensions of this power generator by increasing the operating pressure of the autoclave to be able to mount it on cars, trucks and agricultural tractors. Not having done this, it was not possible to think that the overall dimensions could still be reduced by using submersible pumps such as turbines mounted directly in cylindrical tubes which would act as autoclaves. Therefore these groups could be used to be inserted directly into wells to raise the water and at the same time oxygenate the aquifers which today are polluted by agricultural fertilizers, herbicides and pesticides and fecal coliforms. In fact, we know well that part of the air that pressurizes the autoclave dissolves in the water according to the Henry principle, purifying the water for free. Not having done this, it was not possible to think that the dimensions could still

be further reduced. Even miniaturized and instead of purifying the water of the wells we could purify the human blood, placing two small autoclaves side by side which would replace the right and left ventricles, creating energetically autonomous artificial hearts which would power the systemic circuit which oxygenates the brain and the lungs to extend the life of the 'man. Not having done this, it was not possible to think that the pressurized cylindrical autoclaves could be incorporated with external cylinders containing water at atmospheric pressure, outside of which sliding tracks of permanent magnets mounted on transmission chains driven by motors could be created. electric ones with variable speeds which would produce an electromagnetic flow of variable intensity which would produce currents induced in a solenoid external to the water tank itself. Therefore, we could produce in such a tank a linear electromagnetic thrust force according to Lorentz's law at room temperature, without fuels which could be added to the Newton reaction thrust which would be produced by propellers driven by electric motors always controlled by generators of current that produce primary hydroelectric energy, powered by submersible pumps used as turbines placed inside the central tanks. Not having done this, it was not possible to replace the current thermal turbofans of airplanes to travel in the atmosphere and space with energy extracted directly from the environment, it was not possible to create flying cars, nor submarines that move with the same system without fuels. It was not possible to make ships travel without fuel, nor to mount the same system to create mobile barriers in the sea to defend ourselves from high waters. It was not even possible to think that in future space travel we can add to the global linear engines an external steel tunnel connected to the turbo fan, where a high vacuum higher than the surrounding space vacuum will be produced and connect this tunnel with a small vacuum pump to a condensation tank for the captured dust, which will be emptied periodically by letting in atmospheric air which will feed an electrostatic filter which will recover the dust which will be

used together with the other interactive purification and energy plant inventions described on the website <https://www.spawhe.eu> to allow humans to survive even in space without suffering physiological damage due to the absence of atmospheric pressure, gravity, food resources and raw materials to build spare parts for the machines necessary for survival in space. In fact, atmospheric air and water will fill the space caravan wagons full of humans and will be endlessly recycled, appropriately replenished with artificial photosynthesis and the carbon cycle, while the general gravity will be strengthened, becoming very similar to the terrestrial one, electrostatically polarizing the paths of conditioned atmospheric air and recycled water in interactive, energetic and purification, compressed hydroelectromagnetic systems, still unknown to terrestrial science."

Current science has forgotten that primary fluid dynamic energy is produced by the flow rate and the density of the fluid itself. Therefore, the best solution for producing clean energy at low cost and in infinite quantities is: using the elasticity of compressed air as an energy source (which is not consumed) and water as an energy carrier (which with the use of new pumps with separate double power supply up to the impeller, can recycle it infinitely by exploiting the maximum pressure of the compressed air and the density of the water (a liquid with a density 2.5 times higher than water has recently been patented it can also be used in mobile systems and in pressurized circuits of reinforcement to submerged hydroelectric energy without the hydraulic jump).

Therefore, heat has never been used to produce electricity. This was the biggest mistake in world science, because water is not only the best physical energy carrier, it is also the best electromagnetic carrier, having the natural ability to ionize into ions ( $H^+$ ) and ( $OH^-$ ). it was conferred directly by nature, that is, by GOD. Excluding water from the production of energy means excluding physical, chemical, biological,

neurological life, above all, producing energy coldly. With my miniaturized solution it would also be possible to create a small artificial heart, energetically autonomous, blood oxygenator, which could extend human life by many years. I believe that my artificial heart was not financed by the current ruling class because, if it works, it demonstrates that men have made mistakes in the most important inventions for the survival of nature and the human race, just to accumulate money. However, it is also possible that they will keep this invention hidden only from the narrow circle of men in power, excluding even the inventor.”

It wasn't easy to work alone on these interactive purification and energy solutions, which no one sees and which no one feels the need for. I have been forced into solitude in the workplace, and also to work for free for future generations who are not to blame for the choices that current ones make. However, the turning point that led me to start extracting clean energy directly from the environment began with the following Italian patent filings:

102014902290390 (CE2014A000011) dated 09.03.2014 entitled Marine water pumping systems suspended from floating platforms for down and upwelling; 102014902298581 (CE2014A000012) dated 03.11.2014 entitled vertical hydroelectric systems with water recycling; 102015000048792 (UB2015A003412) dated 04.09.2015 entitled Mobile perpetual current generators with compressed air or gas and water recycling; 102015000048796 (UB2015A003404) dated 07.09.2015 entitled Electric pumps and turbines with double feeding mouth; 102016000057968 (UA2016A004148) dated 06.08.2016 entitled Desalinizers – vertical ion exchange demineralizers with hydroelectric energy production; 102016000058416 (UA2016A004177), dated 08.06.2016 entitled Floating system with extruded, ribbed, reinforced and polystyrene filled polyethylene tubes; 102016000066396 (UA2016A004687), dated 06.27.2016 entitled autoclave system for water lifting, producer of hydroelectric energy;

102016000087373 (UA2016A006226) dated 08.26.2016 entitled Hydroelectric car with peripheral drive torque at the wheels; 102016000111939 (UA2016A008002), entitled Pressurized hydroelectric plants submerged in wells with lifting and oxygenation; 102016000111938 (UA2016A008001), dated 11.16.2016 entitled Pressurized hydroelectric plants submerged in basins with lifting and oxygenation; 102016000058018 (UA2016A004152), dated 11.16.2016 entitled Floating, hydroelectric plant, desalination plant, calcium and carbon extractor from deep sea waters; 102016000130510 (UA2016A009428), dated 12.23.2016 entitled Pressurized domestic plumbing system, hydroelectric energy producer; 102017000059993 (UA2017A003967) dated 01.06.2017 entitled Pressurized hydroelectric aerospace transport system with turbofans and compressed air injection.

The list continues with other inventions on fuel-free aerospace transportation. But stopping at the production of submerged hydroelectric energy in basins and aquifers, my reflection that I propose in this article is the following:

What would have happened if submerged and compressed hydroelectric energy, proposed by the undersigned and not financed, had been invented and created in 1900, a few years after the construction of the first hydroelectric power station; a few years before the publication of Albert Einstein's theories of relativity?

I have already answered this question, which I asked myself, asserting that that was the best time to scientifically and technologically improve hydroelectric energy. However, since then the hydroelectric sector has not innovated conceptually and thermal energies have advanced and nuclear which produce CO<sub>2</sub> and steam in very large quantities. These sectors based on large combustion and large reactors have also involved large high voltage energy transports on aerial pylons, in which hydroelectric energy also participated, which cannot fail to interfere with the natural ion exchange between the ionosphere and the earth's surface which meteorological science in the

same historical period had already identified. Therefore, the various branches of science have not coordinated up to the present day to prevent the production of energy and its transport from worsening the environmental and climatic conditions of the planet. To the combustion fumes of fixed and mobile energy plants, the production of CO<sub>2</sub> and steam, the transport of energy on pylons, with the energy produced with the hydraulic jump, there have also been the collapses of dams, their overflows, which they are much more harmful than the benefit of the energy produced if they do not exploit natural hydraulic jumps. In fact, the water basins kept full to the maximum level to produce electricity have increased the speed of the water towards the agricultural valleys and urban centers while the thermal, nuclear and solar power plants have increased the CO<sub>2</sub>, the steam and the quantity of electrical energy from transport on pylons.

I, who started being an inventor in 2005, dedicated nine years to trying to clean fossil energy and improve the water and air purification systems together in chimneys, sewers and purifiers. In the years 2014-2016 I invented submerged and compressed hydroelectric power to create artificial rainfall on limestone greenhouses, telling and artificial rainfall to produce carbonates in water to produce electricity generators, which in the following years I also proposed on means of transport and even in an artificial heart that oxygenates the blood. Therefore, it took me nine years of work to realize that I had to investigate the hydroelectric sector which, being able to cold produce energy, had the potential to extract clean electrical energy directly from the terrestrial environment, to use it for civil, industrial and healthcare purposes. on means of transport and work. In 2024 I developed all possible solutions without raising a single euro of public or private funding. So I apologize for the delay with which I came to investigate this sector and also for the fact that I was not good at making myself understood. But I think that those who really need to apologize to the people of the world



are the entire world science which has completely neglected the energetic, purifying, electromagnetic reflections hidden behind the hydraulic jump of water which was only the most striking aspect of hydroelectric energy production, which in the end, in 2024, the undersigned preferred not to use, to exploit only the submerged and compressed hydroelectric energy, which is lighter, more powerful and manageable than that of the hydraulic jump, being able to be created of any size and power, up to even entering the human chest to create small artificial hearts. It is clear that these solutions are at odds with the choices that the world's leading scientists are making. who still insist on thermal and nuclear energies. For the undersigned, it makes no sense to produce fossil and even worse nuclear heat and then have to cool it in the practical uses of daily life on earth, industrial, agricultural, urban, in terrestrial, marine, aeronautical and space transport systems.

In fact, not even terrestrial electromagnetism can be coupled directly with thermal energy. If we consider that fossil and nuclear fuels are not free like water and air and that the technologies are more complex and that costs must also be added of cooling and air conditioning,

I personally, who have been working in industrial and environmental anthropic systems for 55 years, cannot understand the reasons why we, human beings, cannot extract cold energy from the earth's environment, taking advantage of the advantages offered for free by gravitational force, flexible and compressible atmospheric air and incompressible, impalpable, ionizable water.

Above all, today, when technology would allow it, why don't we regulate the amount of energy to be extracted from the environment with inverters, controlling the number of revolutions of the motors that power the pumps which in turn power the turbines connected to power generators?

Why has science not exploited the physical laws due to the gravitational force, to the hydrostatic pressure, which allow the alternator coupled to the turbine to produce more electrical energy than that absorbed by the pump, which must only overcome the state of inertia of the energy vector, which is the water or any other liquid contained in the system, open to atmospheric pressure only at the turbine outlet, but with the water or the energy liquid infinitely recyclable, thanks to the invention of the undersigned called "dual fuel pump separated up to the impeller".

It should be clear that a compressed hydroelectric plant, in addition to the hydrostatic head and the pressure of the autoclave, can also be strengthened by using an energy carrier liquid that is denser than water.

It should be clear that several compressed hydroelectric plants put together on a land, sea, space aeronautical means of transport, with their own electrical energy extracted separately from the environment, can constitute a complete and energetically autonomous energy complex, which can also start from artificial light , with chlorophyll photosynthesis, the carbon cycle, the production of water and air itself and the push of Newton and Lorentz to move in space at a speed proportional to the quantity of energy extracted free of charge from the terrestrial environment and transformed into global linear motors that will be able choose and dose the force to use between that of Newton and Lorentz. This cannot be done today because the terrestrial Lorentz thrust can only be produced with cold electrical circuits. Current terrestrial science, in order to allow the owners of the Earth to sell fossil and nuclear energy, has given up on adding together the forces of Newton and Lorentz. In fact, we could create in the means of transport of the future an additional electrical network powered by autonomous compressed hydroelectromagnetic current generators, which use the compressed air and liquid accumulated in the autoclaves to reinforce the force of the

external global linear motors. The same electrical network can make the permanent magnets circulate inside the means of transport in strategic positions in the desired direction to create or reinforce the Lorentz electromagnetic thrust, already produced by the external global linear motors. The internal power generators themselves exchange atmospheric air with that of the autoclaves which comes out of the vents of the pumps used as turbines inside and outside the cockpits. The internal electrical network powers all the auxiliary electrical circuits, including the small compressors that return the air solubilized in the water or in the energetic liquid to the autoclaves in the one-way recycling phase through the pressurized autoclaves inside and outside the cockpits, powered by the infinite with pumps equipped with dual separate power supplies up to the impeller, which scientists at the service of governments and multinationals still pretend not to understand how it works.

It should be clear that several compressed hydroelectric plants put together on a land, sea, space aeronautical means of transport, with their own electrical energy extracted separately from the environment, can constitute a complete and energetically autonomous energy complex, which can also start from artificial light , with chlorophyll photosynthesis, the carbon cycle, the production of water and air itself and the push of Newton and Lorentz to move in space at a speed proportional to the quantity of energy extracted free of charge from the terrestrial environment and transformed into global linear motors or simply in auxiliary current generators to power the motors that circulate the permanent magnets in the desired direction to achieve the Lorentz electromagnetic thrust; or, reinforce the energy of the electric motors that power the pumps that circulate the carrier liquid in the turbines that turn the alternators that produce the same electric current, which powers everything, including the small compressors that recover the atmospheric air that comes out of the atmospheric vents placed on the tanks which recover the

air dissolved in the water or in the energetic liquid in the one-way recycling phase through the pressurized autoclaves, fed infinitely with the pumps equipped with the double separate power supply up to the impeller, which the scientists at the service governments and multinationals pretended not to understand.

In the meantime, the same scientists have understood much more complex and expensive systems such as the magnetic confinement of the heat of nuclear fusion which can reach one hundred million degrees. The world's public sciences are still competing to obtain energy from the division of the atom and have not financed the simple division of the feed mouth of centrifugal pumps which, applied to the modification of submerged and compressed hydroelectric plants, which it has not even financed, would allow us to extract for free from the terrestrial environment all the energy needed to govern the terrestrial environment at the terrestrial temperature without pollution and also to design aeronautical and space transport systems. I am not against nuclear energy. I find the applications of nuclear medicine and industrial applications that allow the use of lasers, which are limited to the excitation of atoms, very useful.

Producing nuclear energy is crazy in every way. It is nothing other than the exponential multiplication of the defects of thermal energy, which could also have been avoided if, if some common sense scientist had preceded me in the early 1900s, immediately after the construction of the aforementioned Niagara hydroelectric power station. Unfortunately this has not yet happened to this day, which is why I gave this article the strange title of Massimo Troisi's film "Sorry for the delay".

I wasn't yet born when all this global energy and purification disorder began and it took me a lifetime of work in industry and the environment to understand it. None of my bosses or my employers have ever asked me to correct the

errors but only to respect the tender specifications of the systems to be built in industry and the environment. I proposed the corrections as a pensioner without being paid by anyone, also losing the money to file the patents which neither the multinationals nor the public bodies that collaborate with each other to create global development also liked through patent trading. My inventions were not appreciated because they go into the details of neglected purification cycles and the details of sustainable plant design that I would never have been able to propose without knowing the work cycles and existing systems.

This is why I apologized for the delay, not to governments or even to multinationals. But to the entire world population who agitate and protest in squares all over the world, without knowing that if we do not go into the details of the solutions, the best solutions cannot be identified at the same time from an economic, environmental and energy point of view. Only comprehensive solutions produce development and well-being for all democratically. Solutions that produce incomplete solutions allow illicit speculation that enriches speculators and harms the less well-off classes. Designing comprehensive and impartial anthropogenic facilities using the most up-to-date technologies in the right place and at the right time should be a social and moral duty, especially for public planners. Unfortunately, according to my over fifty years of experience, it is precisely the public systems that are the most wrong. Even industrial plants are wrong from an energy and environmental point of view, but they are saved due to a better scientific organization of work. The reasons why I believe I have solved both the problem of global warming and the problem of sustainable energy that will take us into space at the same time are due to the fact that I have brought the scientific organization of industrial work in the environmental sector into environmental and energy sector. There could be no progress in the environmental and energy sector without a transfer of industry experiences to the

environment and without preparing the systems and infrastructures to follow the common cycles of water, air and fumes, reducing costs. and increasing the speed of purification and energy processes, as if we were competing for efficiency with a planet similar to Earth.

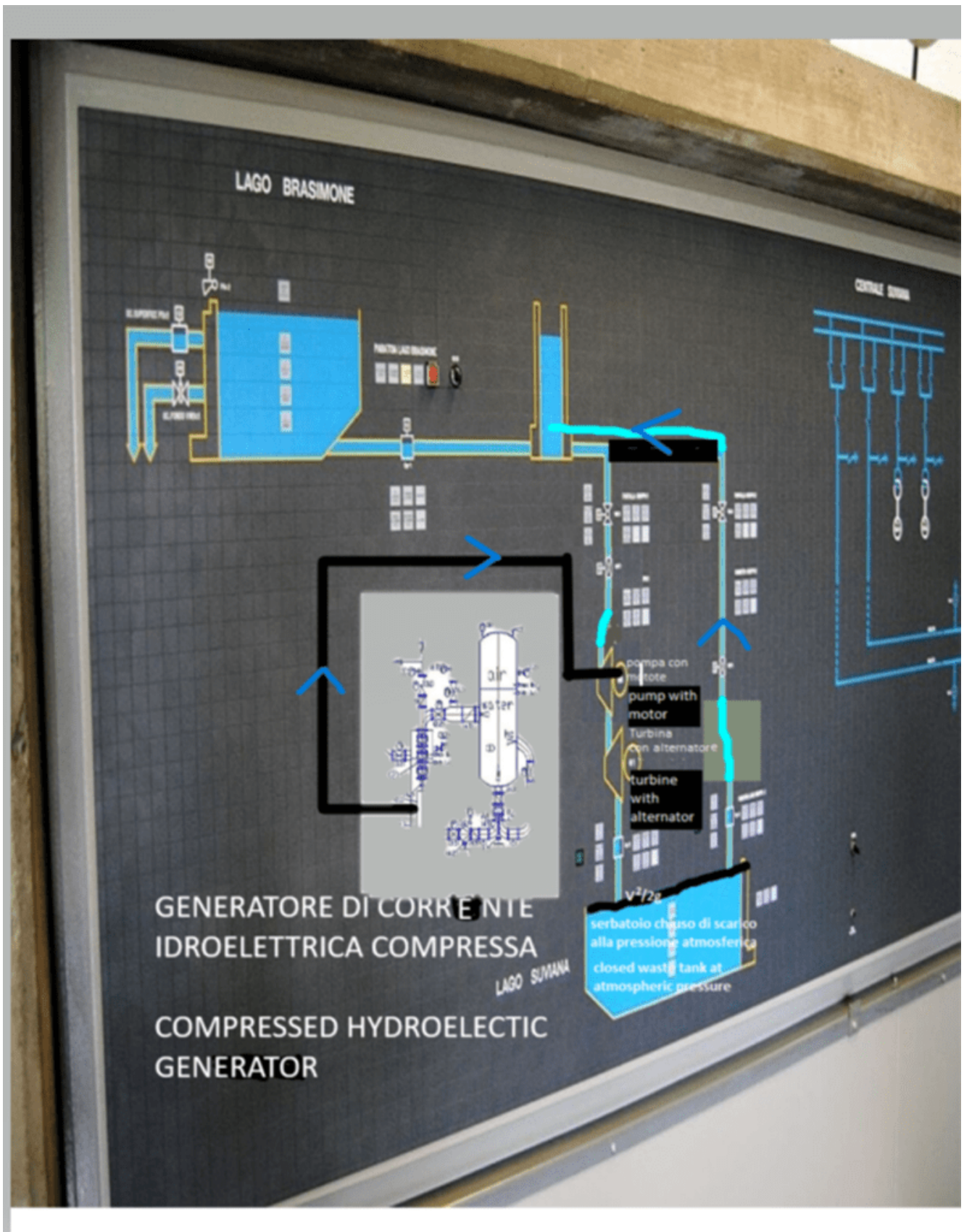
Only by virtually modifying the functioning of the chimneys and sewers was it possible to create purification cycles of common water and air, which first led to the creation of artificial rain and then to economizing the processes by modifying the way the pumps, which we use, work. only to raise the waters. Instead, if we use them the other way around, pumping the water in the direction of the gravitational force, they become a tool for extracting energy from the environment. Obviously this is only the first step to take. Not finding public or private interlocutors, I was forced to virtually follow the entire path described in Spawhe's nursery rhyme. If I got some detail wrong, only with experimentation can it be improved. For the moment I can assert that I followed an original path in the hydroelectric sector which was innovated only with large civil and structural works which brought more disasters than benefits, altering the natural distribution of terrestrial waters. The current hydroelectric system combined with the production of fossil and nuclear energy which has produced CO<sub>2</sub> and steam in very large quantities and combined with the high voltage transport of electricity, produce the perfect alternations of floods and droughts, as if they had been specifically designed to destroy planet Earth, which had a perfect climate before 1900.

By producing cold electrical and electromagnetic energy across the entire planet we can save the economy and the Earth's environment while also seriously starting the path to exploring space.

Naturally, before doing all this we must extend human life with the energetically autonomous human blood oxygenating artificial heart, which is also part of the inventions

misunderstood by current earth science.

Luigi Antonio Pezone



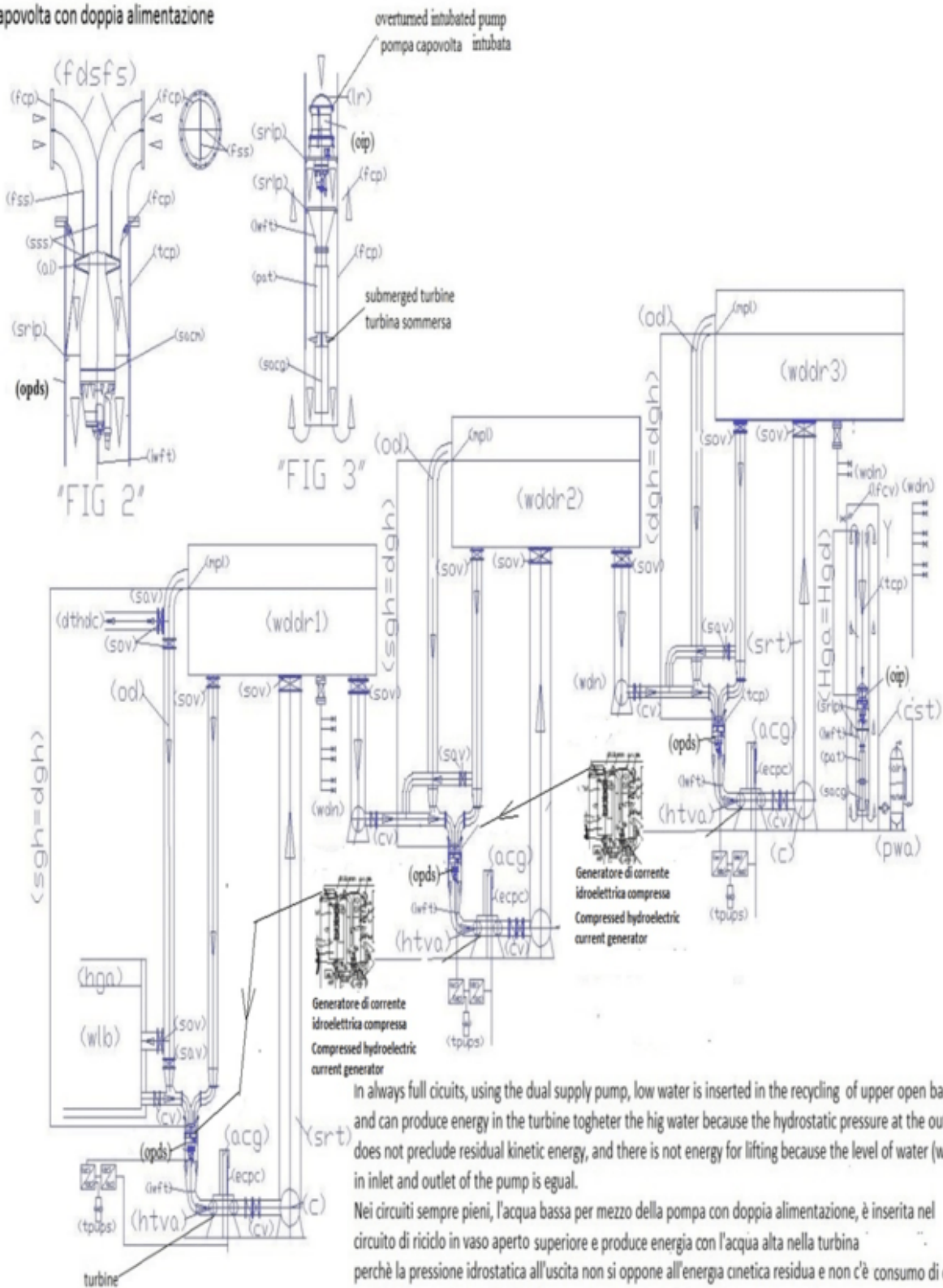
The figure above indicates the way to transform a

hydroelectric plant with the hydraulic jump into a submerged hydroelectric plant without the hydraulic jump reinforced with compressed hydroelectric energy extracted directly from the terrestrial environment according to the following articles already published.



overturned pump with dual supply (opds)

pompa capovolta con doppia alimentazione



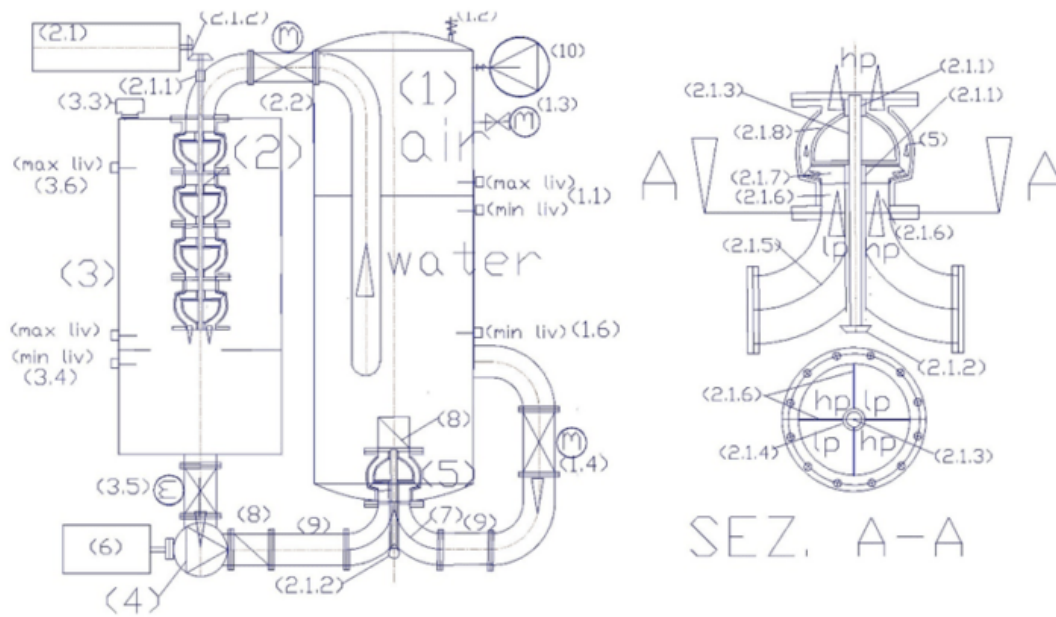
In always full circuits, using the dual supply pump, low water is inserted in the recycling of upper open basin and can produce energy in the turbine together the high water because the hydrostatic pressure at the outlet does not preclude residual kinetic energy, and there is not energy for lifting because the level of water (wddr) in inlet and outlet of the pump is equal.

Nei circuiti sempre pieni, l'acqua bassa per mezzo della pompa con doppia alimentazione, è inserita nel circuito di riciclo in vaso aperto superiore e produce energia con l'acqua alta nella turbina perchè la pressione idrostatica all'uscita non si oppone all'energia cinetica residua e non c'è consumo di energia per il sollevamento perchè il livello in aspirazione e mandata della pompa è uguale.

Sistema di sollevamento idroelettrico a gradini sommerso rinforzato con sistema idroelettrico compresso

Reinforced submerged stepped hydroelectric lift system with compressed hydroelectric system

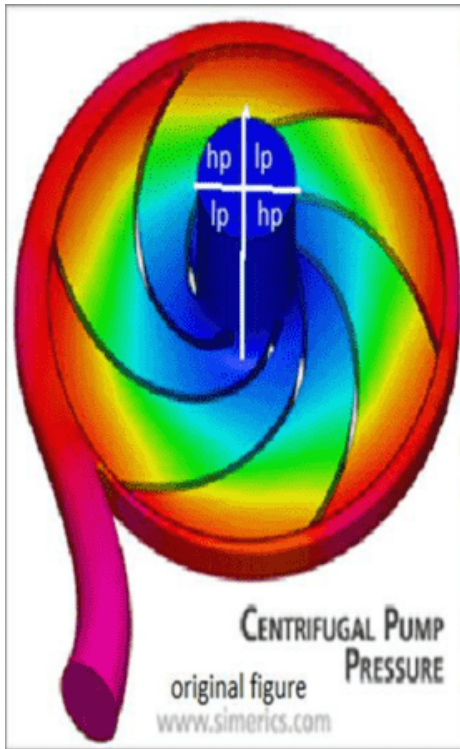
<http://www.spawhe.eu/the-energetic-miracles-of-pumps-with-separated-double-supply-until-to-the-impeller/>



## PRESSURISED RECIRCULATING HYDROELECTRIC GENERATOR FOR INDEPENDENT MOTORIZATION WITHOUT FUELS OF AUTO, TRUCKS, BUS, TRAINS, SHIPS, AIRCRAFT.

Legend : (1) autoclave pressurized tank; (1.1) level regulator with capacitive probes; (1.2) safety valve; (1.3) manometer with shut-off valve; (1.4) motorized valve flow control with position transmitter; (1.5) pressure or flow transmitter; (1.6) minimum level probe in the start system; (2) pump used as a turbine (pat); (2.1) alternating current generator; (2.1.1) bushing with sealing ring; (2.1.2) angle diverter with conical gears; (2.1.3) transmission shaft; (2.1.4) transmission shaft protection tube (2.1.5) double curve with septa crossed separators in low pressure (LP) and high pressure (hp); (2.1.6) septa separators of flow; (2.1.7) closed type; (2.1.8) Diffuser of the pump; (2.2) motorized valve to supply turbine with flow adjustment; (3) water transit tank at atmospheric pressure and containment pat; (3.1) motorized valve to feed pressurized water network; (3.2) motorized valve bypass supply at low pressure; (3.3) air valves; (3.4) Water level control with capacitance probes; (3.5) motorized valve for water supply at low pressure; (3.6) maximum level probe in the start system; (4) electric pump to supply in low pressure (5) electric pump with double separate supply until the impeller; (6) pump drive motor, with variable speed, controlled by an inverter; (8) check valve. (9) flow diverter stub pipe; (10) electrocompressor;





hp = high pressure = alta pressione  
lp = low pressure = bassa pressione

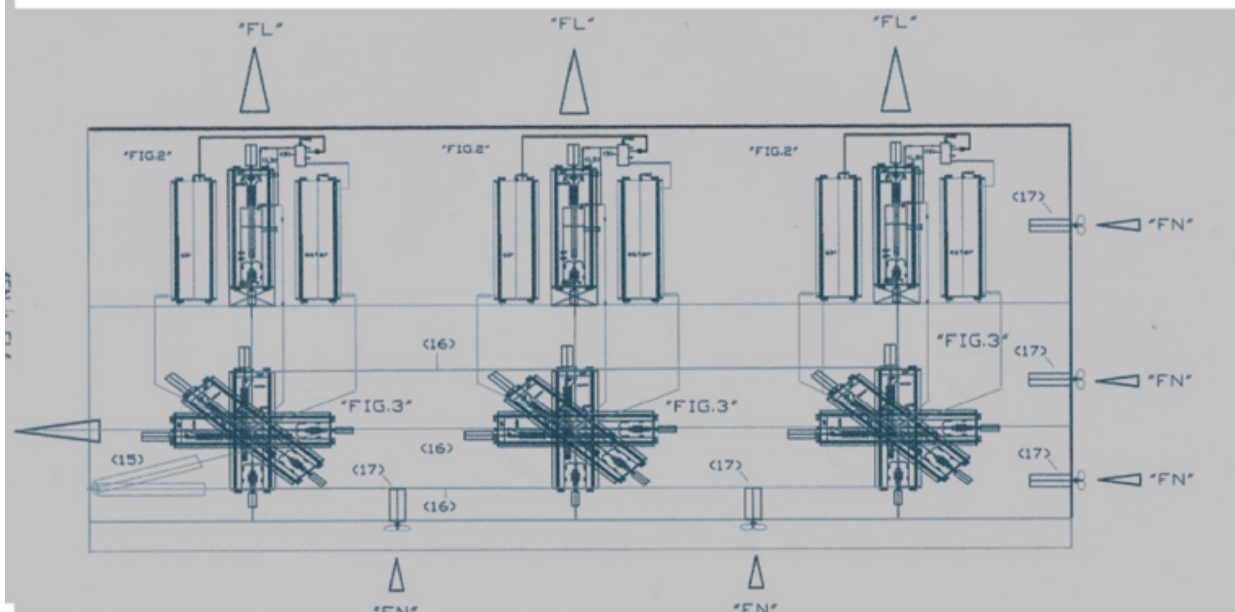
<http://www.spawhe.eu/relativty-and-technology-in-the-new-hydroelectric-energy/>

In the pumps, the centrifugal force, having radial direction, creates a depression capable of attracting the liquid intubated, external to the pump. The low pressure area is at the center of the impeller, is called "eye of the pump" is colored in blue on the attached drawing and corresponds to the input of water into the impeller. In the green zone begins the pressurization of the liquid, which is completed in the red zone. It's clear that if we feed a pump with two flow rates equal but different geodetic heights, we have a considerable energy saving because it is the water from the upper reservoir, which can be recycled, to raise the water from the lower basin, by means of mixing water and the expansion of the greater pressure that happens in green and red area. Obviously, with this solution, they do not serve multistage pumps and motors of great power, but single-stage pumps with double flow and small power engines, dimensioned for water recycling, and not for lifting. If we divide the two flow rates in four areas, arranged diagonally, also we balance the forces on the bearings. Each sector is always powered with the same water, but the rotation of the impeller allows the flow sequence on the same blade so that the one with greater hydrostatic pressure to push the one with lower pressure. In essence, it is what happens in multistage pumps but with lower costs in the construction of pumps, motors and absorbed powers. But the dual supply pumps, coupled to the turbines also allow the production of energy with the recycling and the water lifting. However, it seems that the pumps with dual power does not affect the authority of the environment, the pump manufacturers and investors in general. They find not investors.

Nelle pompe, la forza centrifuga, avente direzione radiale, crea una depressione capace di richiamare il liquido intubato, esterno alla pompa. La zona di depressione è al centro della girante, è chiamata "occhio della pompa" è colorata in blu sul disegno allegato e corrisponde all'ingresso dell'acqua nella girante. Nella zona verde inizia la pressurizzazione del liquido, che si completa nella zona rossa. E' evidente che se alimentiamo una pompa con due portate uguali ma battenti diversi, abbiamo un notevole risparmio energetico perché è l'acqua del bacino superiore, che può essere a riciclo, a sollevare l'acqua del bacino inferiore, per mezzo della miscelazione dell'acqua e l'espansione della pressione maggiore che avviene nella zona verde e rossa. Ovviamente, con questa soluzione, non servono pompe multistadio e motori di grande potenza, ma pompe monostadio con portate doppie e motori di piccola potenza, dimensionati per il riciclo dell'acqua, non per il sollevamento. Se dividiamo le due portate in quattro settori, disposti in diagonale, equilibriamo anche le spinte sui cuscinetti. Ogni settore è alimentato sempre con la stessa acqua, ma la rotazione della girante consente la successione dei flussi sulla stessa pala in modo che quello con maggiore pressione idrostatica spinga quello con minore pressione. Nella sostanza, è quello che avviene nelle pompe multistadio ma con minori costi nella costruzione delle pompe, dei motori e delle potenze assorbite. Ma le pompe con doppia alimentazione, abbinate alle turbine consentono anche la produzione di energia con il riciclo e il sollevamento delle acque. Tuttavia, sembra che le pompe con la doppia alimentazione non interessino le autorità dell'ambiente, i costruttori di pompe e gli investitori in generale. Esse non trovano investitori.



<http://www.spawhe.eu> AEROSPACE AND SUBMARINE TRANSPORT SYSTEM WITH INTERACTIVE PRIMARY AND INDUCTIVE LINEAR MOTORS



Figures 7 show the longitudinal section of a generic submarine transport vehicle, which is very similar to the aerospace system, in that it transports watertight containers to the ocean floor. The difference consists in the fact that also the external frame (T) which contains the lateral primary linear motors can be hermetically closed. Just keep the Newton and Lorentz thrusts separate, making the first with external propellers connected to the electric motors (17) located inside the frame. The submarines will not need to empty and fill the sealed chambers with water to adjust the depth of navigation because the weight will be balanced by the force of Lorentz and Newton according to the formula already mentioned  $P = m * (a - a_L - a_N)$ , where "AL" is the acceleration artificially produced with the Lorentz force and "aN" that produced by the reaction force of Newton. The submarines of the future will be much faster, cheaper and safer than the current submarines and will be able to descend to greater depths than the current ones. The legend is not reported being it is already reported in figures 2 and others used, to which the electric turbo fans which have been replaced by normal marine propellers (17) has not been reported. The electromagnetic thrust is produced entirely with the solenoids external to the fluid dynamic systems that also produce primary energy.

<http://www.spawhe.eu> AEROSPACE AND SUBMARINE TRANSPORT SYSTEM WITH INTERACTIVE  
PRIMARY AND INDUCTIVE LINEAR MOTORS

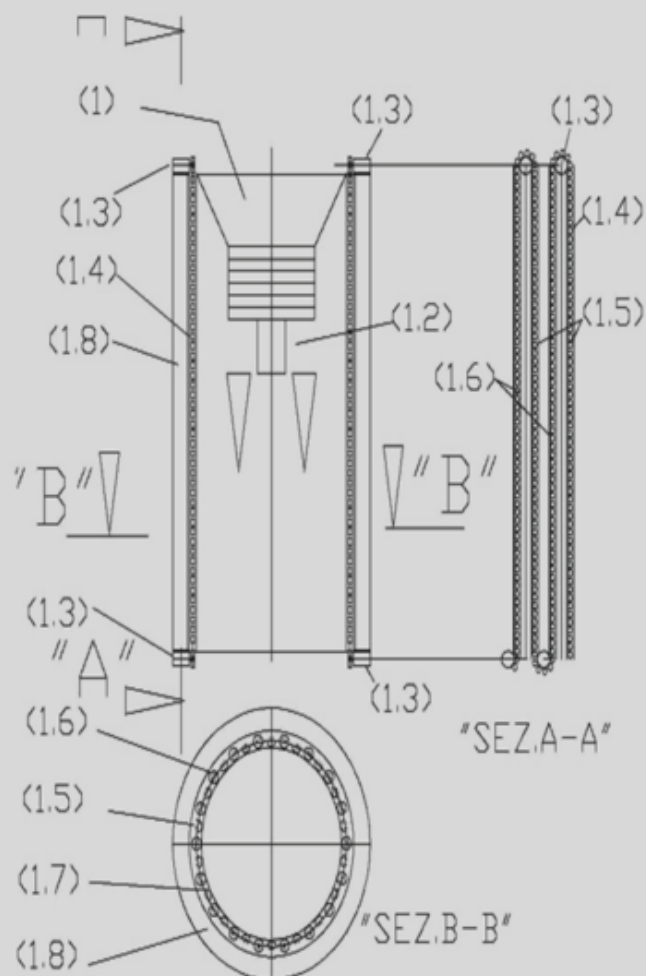


Fig. 1, Modified electric turbofan with Newton and Lorentz thrust:

(1) Electric turbofan; (1.2) variable speed motor controlled by inverter; 1.3 inverter controlled variable speed motor for magnet movement; (1.4) transmission chain complete with permanent magnets; (1.5) open sliding track for chain with permanent magnets; (1.6) closed and magnetically insulated sliding track for chain with permanent magnets; (1.7) air gap; (1.8) solenoid external to the turbofan in a metal housing;

<http://www.spawhe.eu> FLYING AND FLOATING CARS WITH INTERACTIVE GLOBAL LINEAR MOTORS, THRUST OF NEWTON AND LORENTZ.

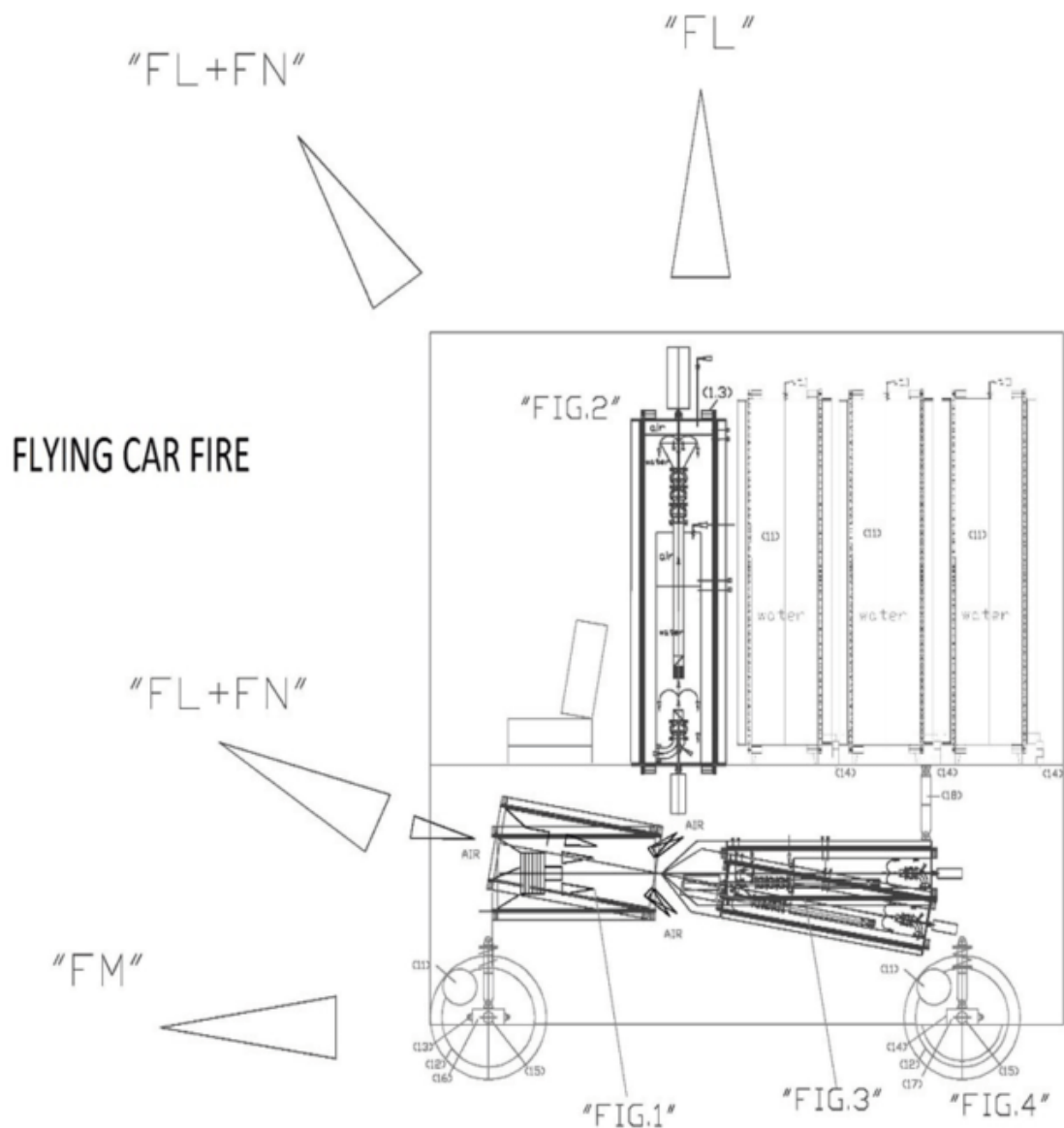
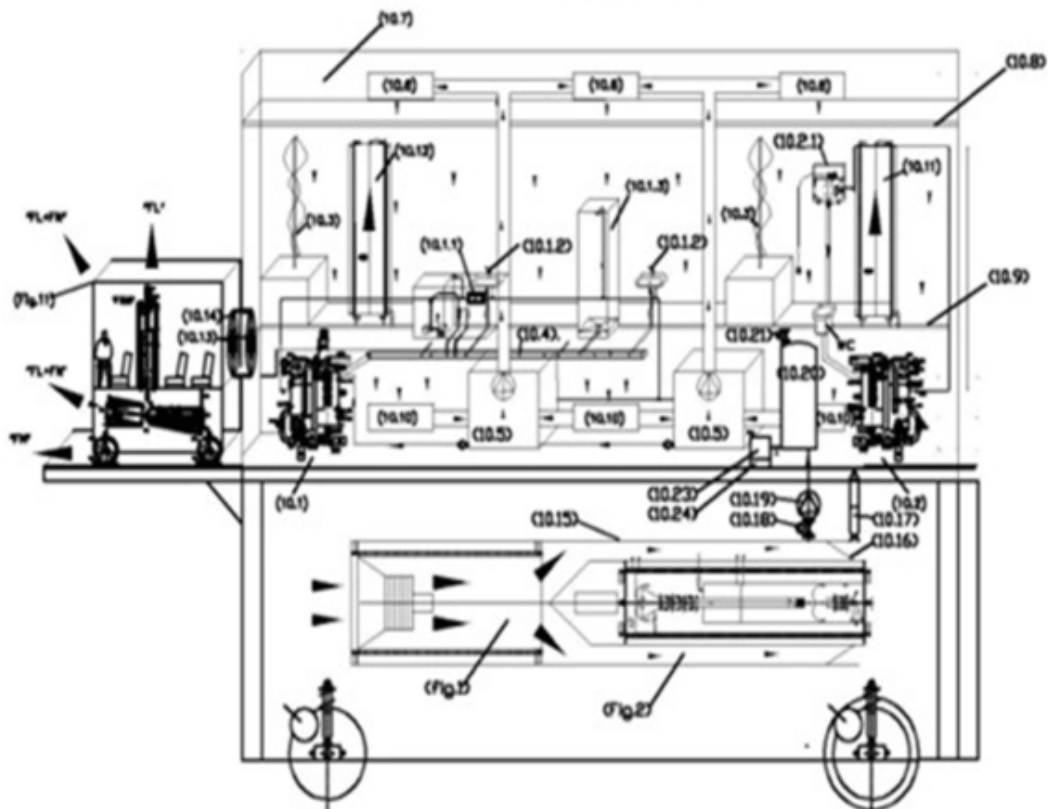


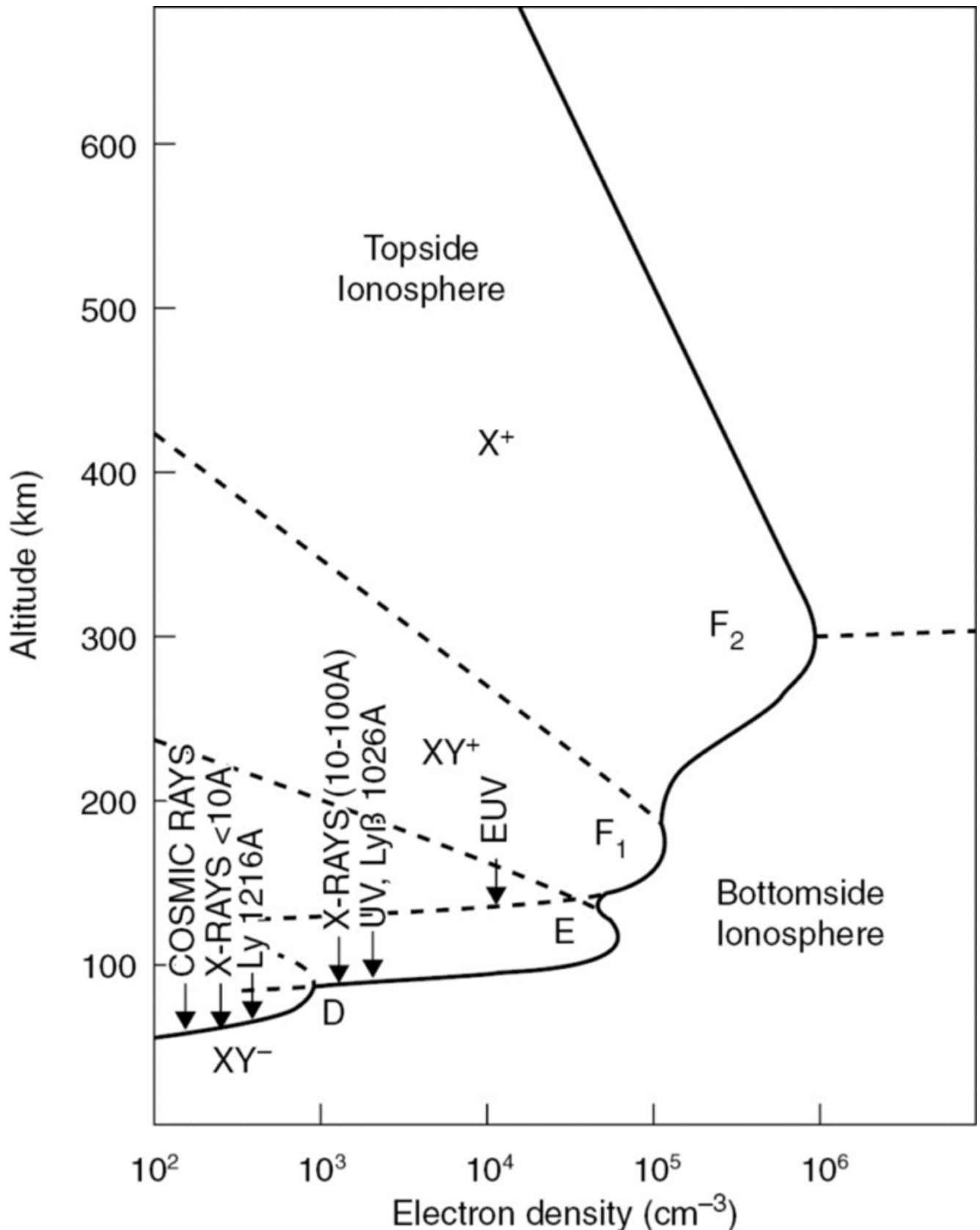
FIG. 6: Lorentz thrust (FL), Newton thrust (FN), drive thrust due to the wheels (FM), electric wheel motors (11), wheels (12), support support for the front wheel drive (13) and rear (14), front axle (16) equipped with an articulated frame to allow minimum turning radii, rigid rear axle (17), electric actuator (18) that changes the inclination of the global linear motor placed under the floor of the car (Fig 1+ Fig3) cylindrical water tanks (11) equipped with sliding tracks for the permanent magnets and external solenoids (1.8) and accessories (1.3,1.4, 1.5. 1.6,1.7) powered by the primary energy produced by the current generators (3.1) of both global linear motors (inside and outside the passenger compartment).





"FIG.10"

(10.1) domestic water purification plant; (10.1.1) ultraviolet disinfection system; (10.1.2) drinking water withdrawal point; (10.1.3) shower; (10.2) toilet waste water treatment plant; (10.2.1) toilet drain pan; (10.3) hydroponic cultivation; (10.4) waste water collection channel; (10.5) purification, humidification and air recycling system; (10.6) electrostatically polarized air inlet vents into the environment; (10.7) ceiling air distribution plenum; (10.8) regenerable filter ceiling in steel straw; (10.9) gridded floor with air passage; (10.10) electrostatically polarized air intake vents; (10.11) water reserve tank with external solenoid and vertical circulation of permanent magnets to produce Lorentz thrust; (10.12) compressed air reserve tank with external solenoid and vertical circulation of permanent magnets to produce Lorentz thrust; (10.13) Airtight passage porthole; (10.14) electromagnetic flexible metal bellows with external vacuum-tight gasket; (10.15) external connection steel tunnel between the electric turbofan fig1 and the compressed hydroelectric primary energy production plant of fig.2; (10.16) truncated conical sector closure of the interstellar dust collection tunnel by means of a steel rope which runs in rings external to the closing cone; (10.17) electric actuator for activating dust collection closure; (10.18) shut-off solenoid valve; (10.19) electric vacuum pump; (10.20) high vacuum dust collection tank; (10.21) air inlet solenoid valve at atmospheric pressure; (10.22) solenoid valve for interstellar dust output; (10.23) electrostatic filter; (10.24) removable container for interstellar dust; (Fig. 11) interstellar local displacement vehicle.



This graph developed by British geophysical scientist Sydney Chapman (1888 – 1970) links ion density (on the abscissa) and altitude (on the ordinate). The areas of the atmosphere in which the various wavelengths of the electromagnetic spectrum are absorbed are also mentioned. Source: University of

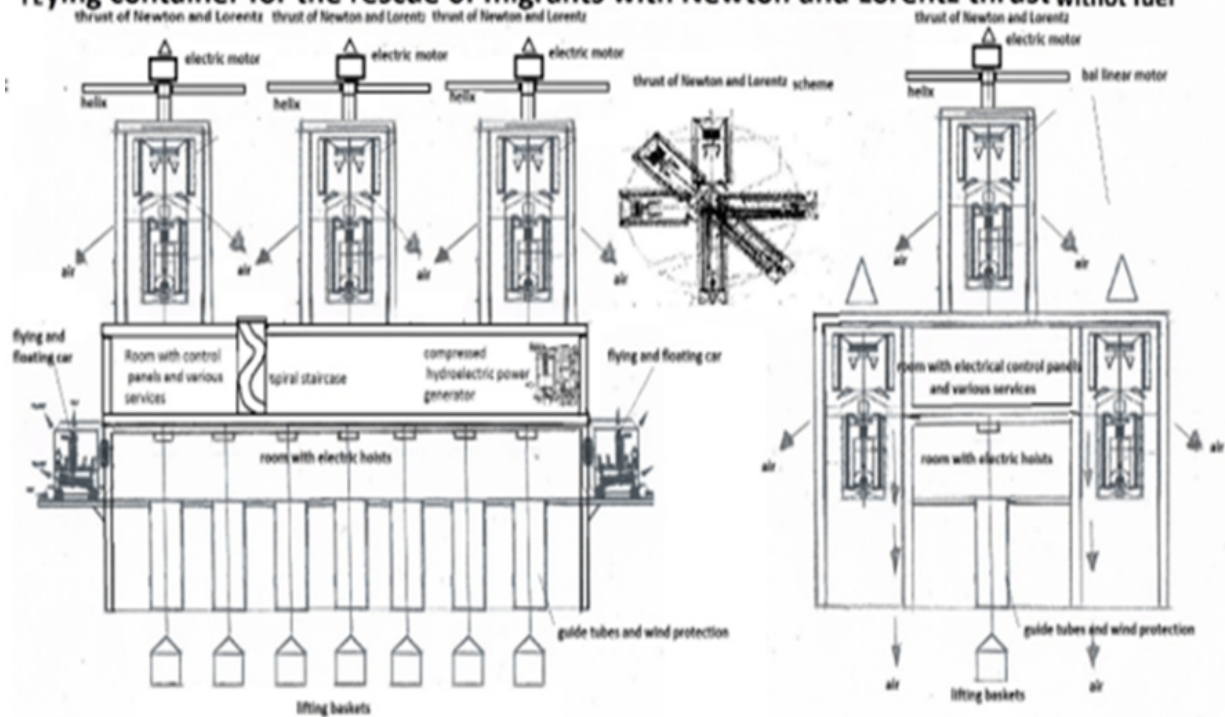


Cambridge.

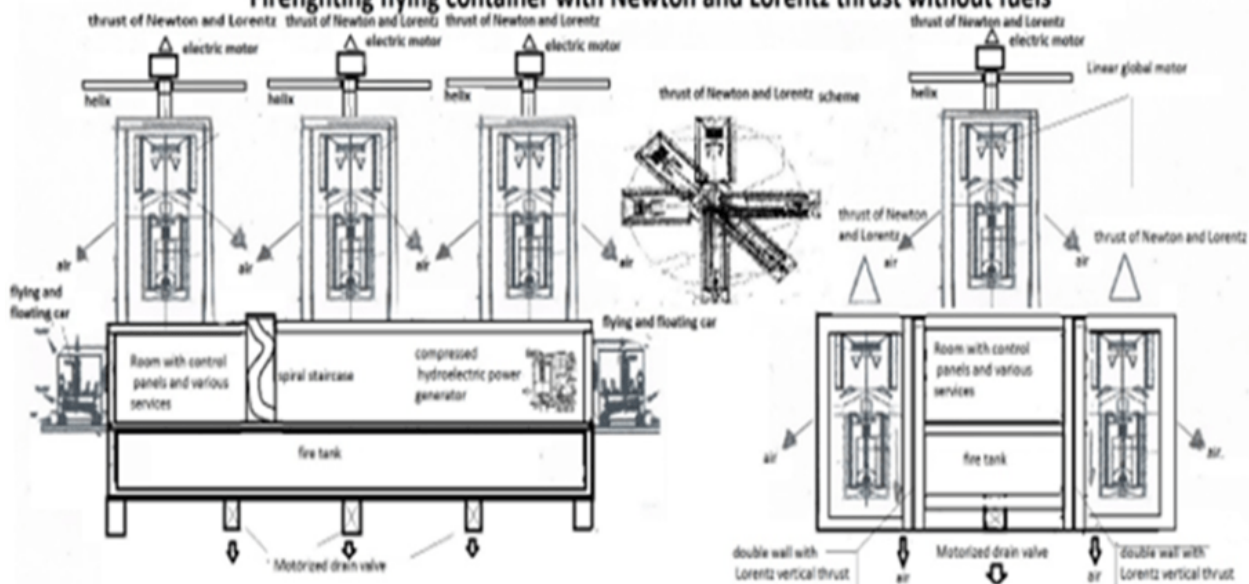
As you can see, the peak of the curve is located about 300 km from the surface of the earth. In this area, monostatic disturbances mainly arise which produce lightning and consequently also natural rainfall. If we, with the cold production of terrestrial energy, eliminate the current excesses of CO vapor and high voltage electrostatic networks that disturb the natural terrestrial system, with the cold transport system and the joint thrust of Newton and Lorentz, we could send the water we know is already ionized, directly in the F2 zone indicated above in the areas where we desire rainfall. Probably, we will also be able to fertilize the deserts, reducing the atmospheric phenomena that are destroying the planet due to the bad energy and environmental designs of earth science.

The figure below shows the means of transport that could perform this function even without a crew, remotely controlled, like a drone from the earth's surface.

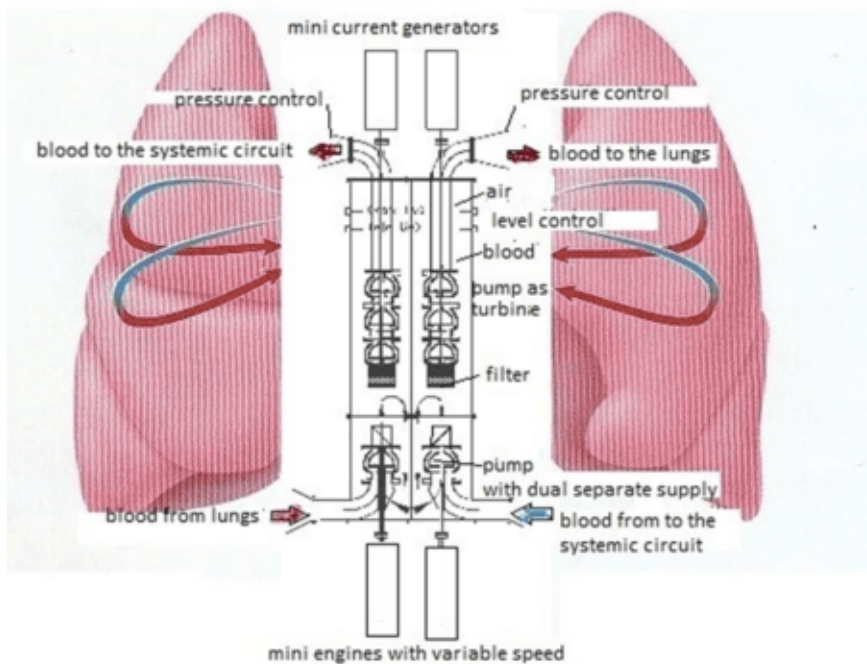
## Flying container for the rescue of migrants with Newton and Lorentz thrust without fuel



## Firefighting flying container with Newton and Lorentz thrust without fuels

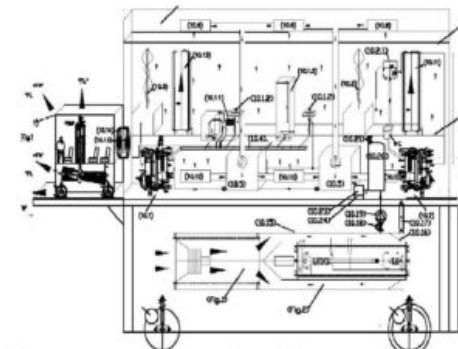
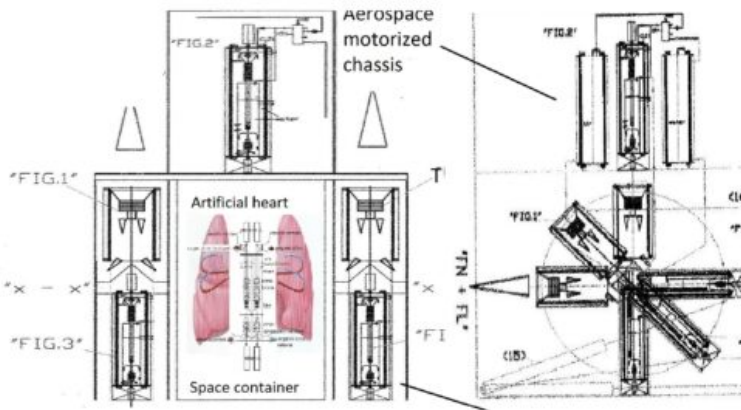


# ARTIFICIAL HEART OXYGENATOR OF BLOOD, ENERGICALLY AUTONOMOUS.

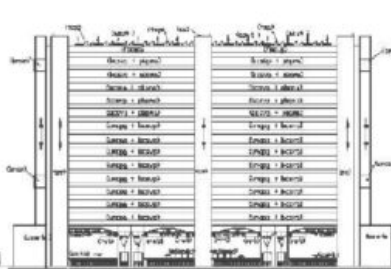


The artificial heart of man, proposed in this patent deposit, closes the circle of sustainable energy based on the only physical principle possible in every remote corner of the Earth: the bypass of the force of gravity and of the elastic pressure of the air that it can be realized everywhere, even in the man's chest, using pumps with the double supply separated until to the impeller, which science, industrialists and world legislators pretend to ignore in order not to admit that they have wronged the entire industrial and economic development. Everything would have been simpler, cleaner and cheaper if this invention had taken place a hundred years earlier, as it could have been. The artificial human heart is the miniaturized version of the autoclave system, already reduced, to make it enter the wells' shirts, to purify the water producing energy. Entering the chest of the man to purify the blood producing the energy needed by the brain is not much different from expected for the wells. They serve two mini parallel autoclave systems that replace the right and left atria ventricles. The two pumps that feed them, with the double supply separated until to the impeller, allowing the balance of the hydrostatic thrust in suction and delivery, allow to get the blood coming from the systemic circulation in the mini autoclave on the right and the one coming from the lungs in that left, bypassing the compressed air pressure. This system works autonomously because the mini autoclave ejects at the same instant the quantity of blood equal to the one that enters, due to the principle of impenetrability of the bodies, through a mini pump used as a turbine connected to a direct current generator. The energy spent by the pump motor is about a tenth of the energy produced by the generator. This allows us to have enough energy available to produce the amount of compressed air necessary to the autoclave and the management of an electronic control unit that with a three-word voice command: "rest, normal, fast" manages the flow and the blood pressure according to the physical activity that it carries out. Although it is the air pressure that circulates the blood in the pump used as a turbine, since the circulation is one-way, apart from air solubilized in the blood with purifying effects, there is no other consumption of compressed air because it is exploited statically and not even electricity to produce it. Although it is the air pressure that circulates the blood in the pump used as a turbine, since the circulation is one-way, apart from the solubilized air in the blood with purifying effects, there is no other consumption of compressed air and electric energy. As published on <http://www.spawhe.eu>, this solution was found by myself after many years spent trying to improve the purification systems of water and air and many patents filed in vain. However, the study served to ascertain that world science has identified single and incomplete scientific principles, which used singly have polluted and warmed the planet. Only with the invention of the pumps with the double power supply separated to the impeller, the undersigned has found the key of the problem. In fact, through it, the dynamic fluid used cold between water and air, especially compressed, would have produced energy protecting the environment, consuming only moderate wear of materials, with low operating temperatures, and air pressures used statically, which would circulate the incompressible liquid. This is the true principle of terrestrial energy that, unfortunately, has not been legislated by world science, which still ignores it, hoping that in addition to myself, no one notices it. Too late. They would have to admit their mistakes, before this energy, despite their silences, also entered the human heart, were, not only it can extend the life of man for many years. But when the other organs are too old, the brain system and the artificial heart. It may also be transferred into an artificial body, which we now call robots, but governed by the human brain and the accumulated knowledge throughout life that will continue to grow even after the death of the body. Reality can overcome fantasy because in no science fiction film this form of human survival has been hypothesized. If the human soul exists it is contained in the brain and its knowledge. It will not be humiliating for anyone to survive thanks to an artificial heart, cybernetic, and some syrup specially designed by nutritionists to be solubilized in small autoclaves that will replace the ventricular atria. When we are ready to do this. We will also be ready to conquer the infinite space. Not before. With our very short current life, we cannot go very far. (<http://www.spawhe.eu/artificial-heart-oxygenator-of-blood-energetically-autonomous/>).

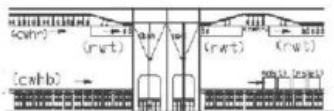




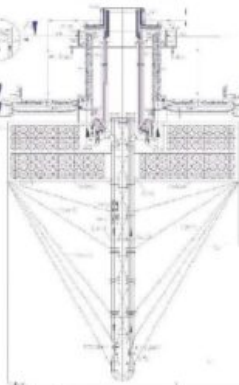
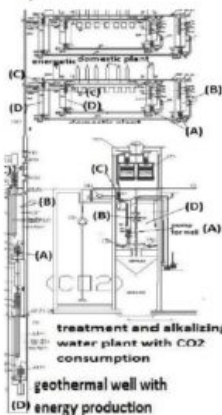
Energy autonomous space container with inter-space dust capture system, internal space survival plants and local displacement vehicle.



Energy-independent vertical synergistic building with purification plants with superimposed biological ponds and with food crops and automated internal transport system



hydroelectromagnetic domestic system



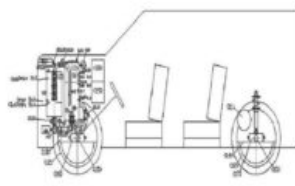
artificial welling with vertical desalination



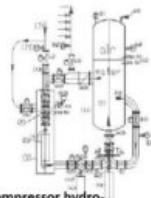
limestone greenhouse with CO2 consumption and alkaline water production.



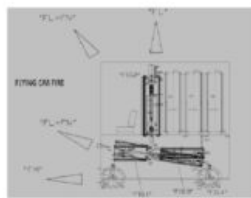
Smoke capture and purification chimney to be combined with limestone greenhouses



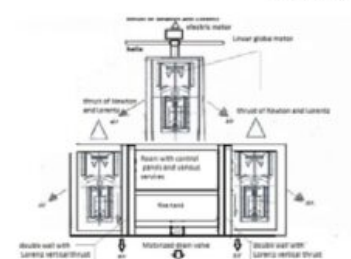
Compressed hydro-electromagnetic car with driving torque applied to the periphery of the wheels



Compressor hydro-electromagnetic current generator with recycling and lifting of condominium waters



Flying fire vehicle with global linear motors, Newton and Lorentz thrusts



Pressurized fire container with Newton and Lorentz

Sorry for the delay (for the hopefully definitive clarification of some aspects of terrestrial energy)

<https://www.spawhe.eu>